

## 4 Button Wirelss Mesh Wall Controller

### Overview

- Casambi Wireless Mesh
- Manual on/off (wireless)
- Dim up/down (wireless)
- Scenes/Color Tuning
- ioXt Alliance Cybersecurity Certification
- LED status indicator light
- 4-Button functions may be customized
- Mounts in any standard wall box
- Color: White



*Suitable for Indoor Use Only*



### Applications

mwConnect's Wireless 4-Button Wall Controller (PSC-DM-WS-400-BLE-CB) wirelessly communicates using Casambi Wireless Mesh controllers to provide scene and light level control to lighting in the space. It can be installed in a standard single gang wall box.

The field-customizable buttons can be programmed for ON/OFF/RAISE/LOWER or preset scenes or for tunable white. Buttons are field programmable using the mwConnect Casambi App.

Typical applications include private offices, open office areas, lobbies, classrooms and conference rooms.

Optional button engraving kits are available.

### Operation

**Casambi Wireless Mesh Controls:** The Wall Control connects to a wireless mesh network via a mobile app, available as iOS or Android, to allow initial setup and subsequent parameters adjustments.

**User Interface:** Using the mobile app, features include: setup, control real time feedback, and scheduling without a gateway or internet access.

**Advanced Features:** Buttons can be programmed using the mwConnect Casambi Mobile App to assign advanced features. On, Off, Raise/Lower, Scenes, Groups, Color Tuning, Sequencing, Light Animations. See page 3 for more details.

See the mwConnect Casambi Commissioning User Manual for more information.

### Summary

Product Type:  
4 Button Wall Controller

Input Voltage | Power Consumption:  
120-277 VAC, 50/60Hz | Max 1.5W

Mounting:  
Standard wall box

Max Wireless Range<sup>1</sup>:  
30ft (9.14m)

Operating Temperature:  
0° to 55°C

Storage Temperature:  
-10° to 60°C

Relative Humidity:  
90-95% non-condensing at 30°C

Color: White or Black

Warranty: 5 years

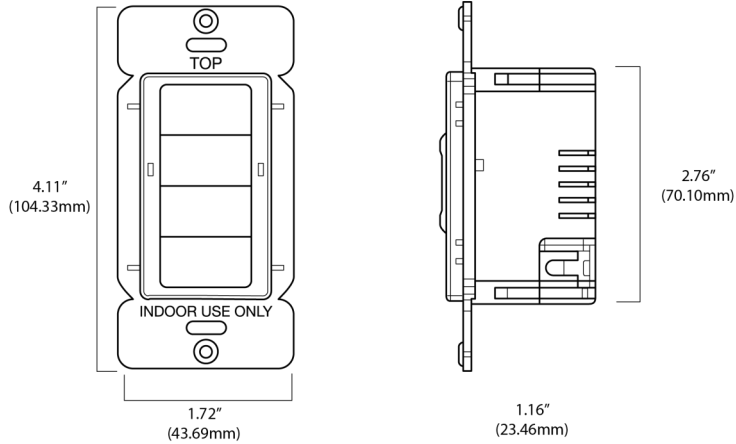
Note:

1. Wireless Range is highly dependent on the integration of fixtures, surrounding environment and conditions. It is recommended to conduct testing for range accuracy.

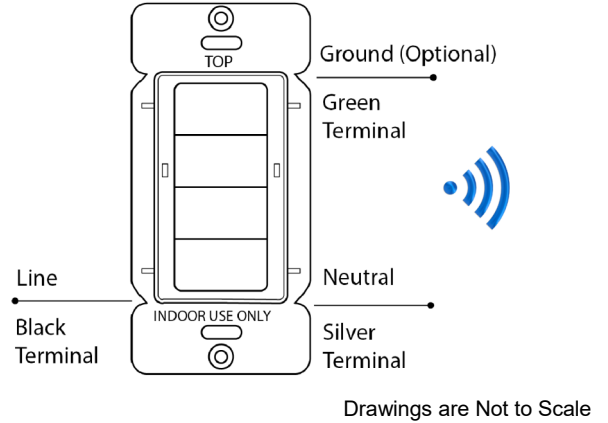
Project

Location/Type

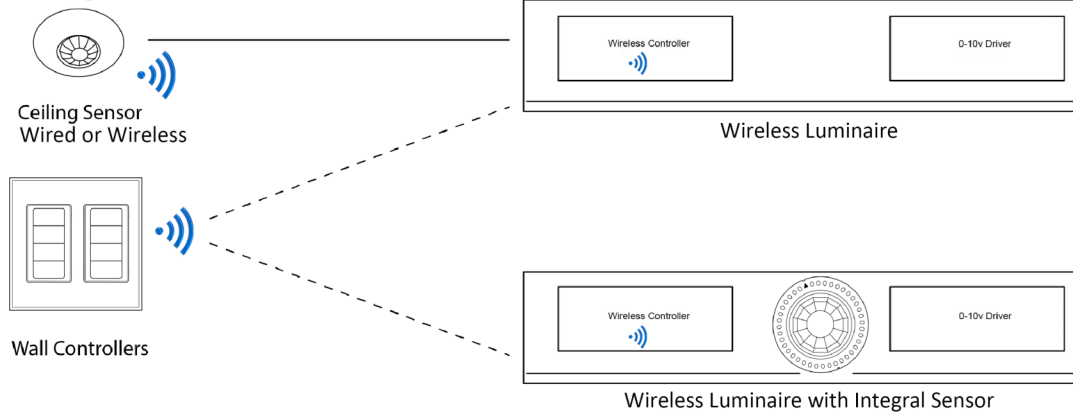
## Physical Dimensions



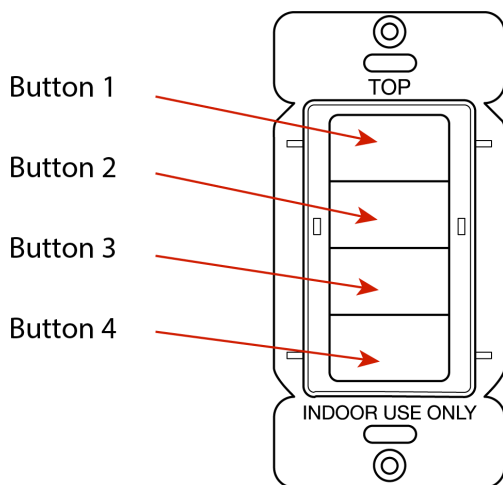
## Wiring Diagram



## Examples



## Wireless Manual Control



**Buttons are programmable.**

**Typical programming: Toggle a Zone ON/OFF and Raise/Lower**

Short press Button 1 - AUTO/ON

Short press Button 1 - Off

Long press Button 1 - Dim Up / Dim Down - Ramps up then down

**Auto** = Resume automatic control; turns on the automatic settings for luminaires (defined by the settings profile).

**Buttons most commonly are programmed as:**

A zone

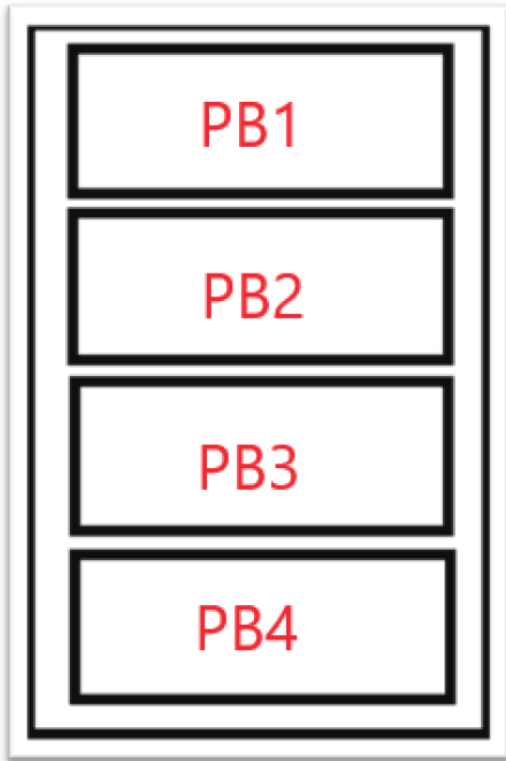
A group

A Scene

**See next page for more functions.**

**Factory reset:** Using the App

## Advanced Programming Button Functions



Four button Configuration

The **PSC-DM-WS-400-BLE-CB** buttons can be programmed using the mwConnect Casambi Mobile App to assign advanced features:

**Buttons can be assigned to control:** (see users guide for more)

A Luminaire (a fixture).

A zone (a group of Luminaires to be controlled together).

An area (a group of groups).

A scene (group 1 @100%, group 2@50%, group 3@15%).

All Fixtures

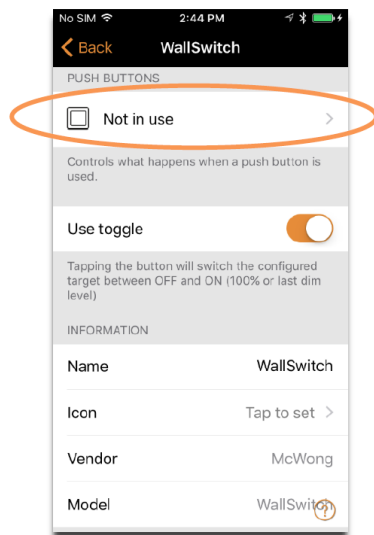
**Toggle:** If you set a button as a toggle you turn on or off any of the above functions. If you turn off the toggle mode then LATP (last action or button press takes precedence).

**Tunable White Adjust Color**

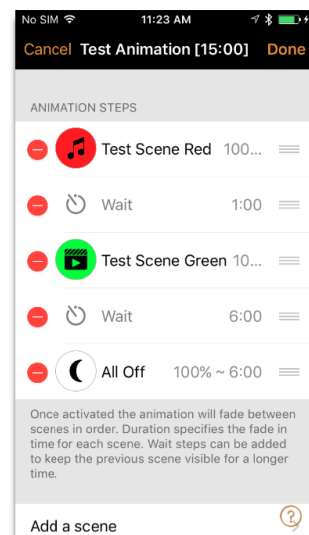
Adjust color of the light output of the light fixtures (tunable white: cooler or warmer to mimic daylight)

**Animation: Dynamic Scenes or Cycle Scenes**

Playback multiple scenes, with adjustable time (fade time), how long the scenes are on (wait), the time transitioning of the scenes (fade), the order of the scenes, repeat. You can have the animation run until you turn off with the switch. Or you can start or stop using the time schedule function.



Configuring switch button



Animation example

## How to Order

Model No.	Description	Input Voltage
PSC-DM-WS-400-BLE-CB-WH	Casambi Mesh Wireless 4-Button Dimmer Wall Controller, Scene Control, White (decorator plate not included)	120-277 VAC, 60Hz
PSC-DM-WS-400-BLE-CB-BK	Casambi Mesh Wireless 4-Button Dimmer Wall Controller, Scene Control, Black (decorator plate not included)	120-277 VAC, 60Hz

Design and specifications are subject to change without notice.