

SAFETY STANDARDS COMPLIANCE:

UL8750
UL1310

LVD EN61347-2-13

EMI STANDARDS:

FCC 47 CFR PART 15 CLASS B
CE EN55015, EN61547
EN61000-4-2,3,4,5,6,8,11

SAFETY CERTIFICATIONS

UL, cUL E357847
CE LVD pending
EMC pending
FCC Pending

INPUT RANGE:

110-277 VAC, 0.25-0.10A
@ FULL LOAD.

THD<20%

FREQUENCY: 50/60 Hz.

POWER FACTOR: 0.97

EFFICIENCY: up to 82%

LEAKAGE CURRENT:

PEAK INRUSH:

20A @120Vac
40A @277Vac

< 0.01mA @277VAC

Surge Immunity: 1.5 KVac

Absolute maximum rating: 20W

OUT #1	TYPE	OUTPUT	MIN	MAX	LOAD REG	MAX. RIP
CC	50-300mA	3V	36V	±5%	10%	

Note for CC output:

It is programmable via P/N 71-1102 TOOL ASSY (HW & SW)
Default factory setting: 300mA

COOLING: CONVECTION

PROTECTION:

NOISE LEVEL: N/A

SCP, OLP, OVP
AUTO-RECOVERY

RELIABILITY (MTBF):

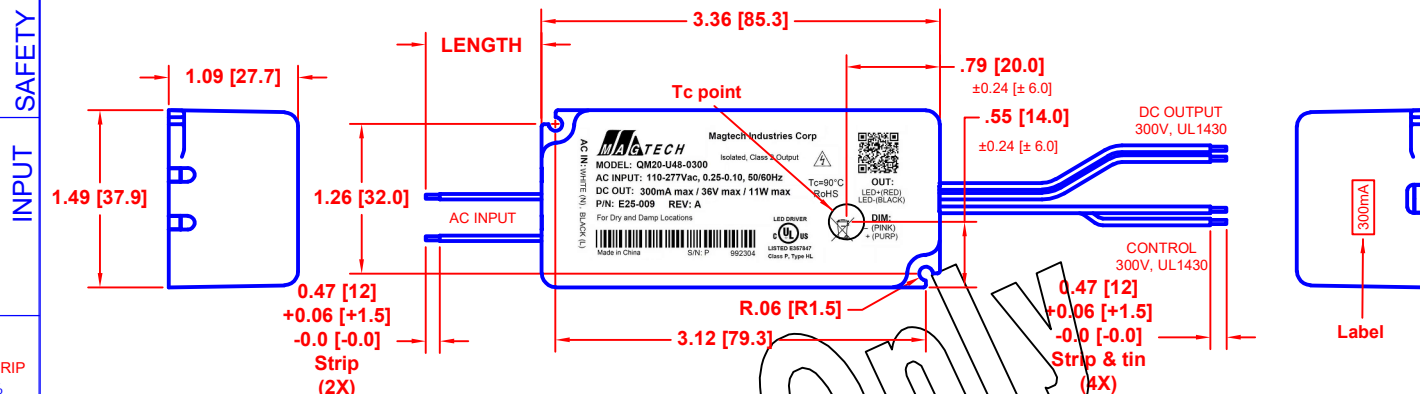
100,000 HRS. @ 25 DEG. C @ FULL LOAD

ENVIRONMENTAL CONDITIONS:

LOWEST OPERATING TEMPERATURE: -40°C: Tc=90°C
RELATIVE HUMIDITY: 5 ~ 95%
LOCATION: For Dry and Damp Use Only

CONNECTOR:

N/A

PF, THD AND EFFICIENCY CALCULATIONS ARE
BASED ON THE LOADING OF THE DRIVER TO
MINIMUM 65% AND MAXIMUM 100% OF 20W

MAGTECH Magtech Industries Corp
Isolated, Class 2 Output

MODEL: QM20-U48-0300
AC INPUT: 110-277Vac, 0.25-0.10, 50/60Hz
DC OUT: 300mA max / 36V max / 11W max
P/N: E25-009 REV: A

Tc=90°C
RoHS

OUT:
LED+(RED)
LED-(BLACK)

DIM:
- (PINK)
+ (PURP)

LED DRIVER
C UL US
LISTED E357847
Class P, Type HL

AC IN: WHITE (N), BLACK (L)

Made in China S/N: P 992304

CON	PIN	COLOR	OUTPUT	AWG	LENGTH
AC IN	---	BLACK	LINE	18	
---	---	WHITE	NEUTRAL	18	
DC OUT	---	RED	+V	20	6.5 [165]
---	---	BLACK	GND	20	±0.5 [±13]
DIM CNTL	---	PURPLE	DIM+	22	
---	---	PINK	DIM-	22	

CUSTOMER APPROVAL

Name: _____

Signature: _____

Date: _____

- Notes:
- 5 yrs warr provided Tc point remains below 80°C
 - Low flickering – Less than 10% up to 120Hz
 - Dimming: 0-10V Dimming, driver will dim to off.
 - 2 in 1 dimming – 0-10V / PWM
 - These LED drivers are suitable for factory wiring only.
 - These LED drivers shall be enclosed on the end product.
 - These LED drivers have been evaluated to Class 2 output requirement.
 - These LED drivers meet the requirements identified as Type HL. Drivers may be used on a Class I, Division 2 hazardous (Classified) location luminaires (Per UL 8750, Supplement SB).
 - These LED drivers meet the requirements identified as Class P (Per UL 8750, Supplement SE).
 - Deleted
 - These LED drivers complies with Low-Voltage Limited-Energy LED Class 2 characteristics.
 - Wired control circuits are isolated (Per UL 8750, Supplement SF).

MANUFACTURED BY:

THIS ITEM IS THE PROPERTY OF MAGTECH INDUSTRIES AND CONTAINS PROPRIETARY CONFIDENTIAL AND TRADE SECRET INFORMATION. THE INFORMATION CONTAINED HEREIN MUST NOT BE USED, DISCLOSED OR REPRODUCED IN WHOLE OR IN PART WITHOUT PRIOR WRITTEN CONSENT FROM MAGTECH IND.

UNLESS OTHERWISE SPECIFIED	QC:	MAGTECH	
DIMENSIONS IN INCHES [MM]			
TOLERANCES:			
.X DECIMALS: .05 [1.3]			
.XX DECIMALS: .02 [0.5]			
.XXX DECIMALS: .006 [0.15]			
ANGLES: 1°			
FRACTIONS: 1/16			
DO NOT SCALE THIS DRAWING	APPROVAL DATE: xx/xx/xxxx	MODEL NO.	DWG NO.
INTERPRET DRAWING PER ANSI Y14.5M	EFFECTIVE DATE: 08/18/2025	QM20-U48-0300	ME25-009