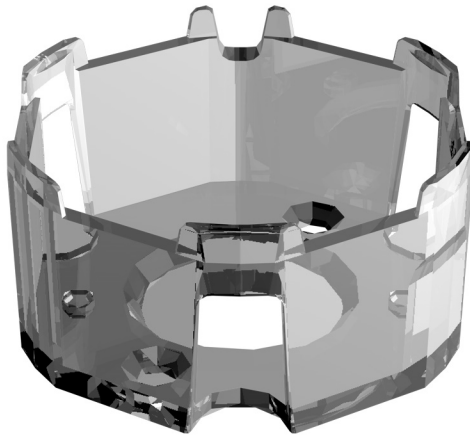


Compatibility Matrix Datasheet



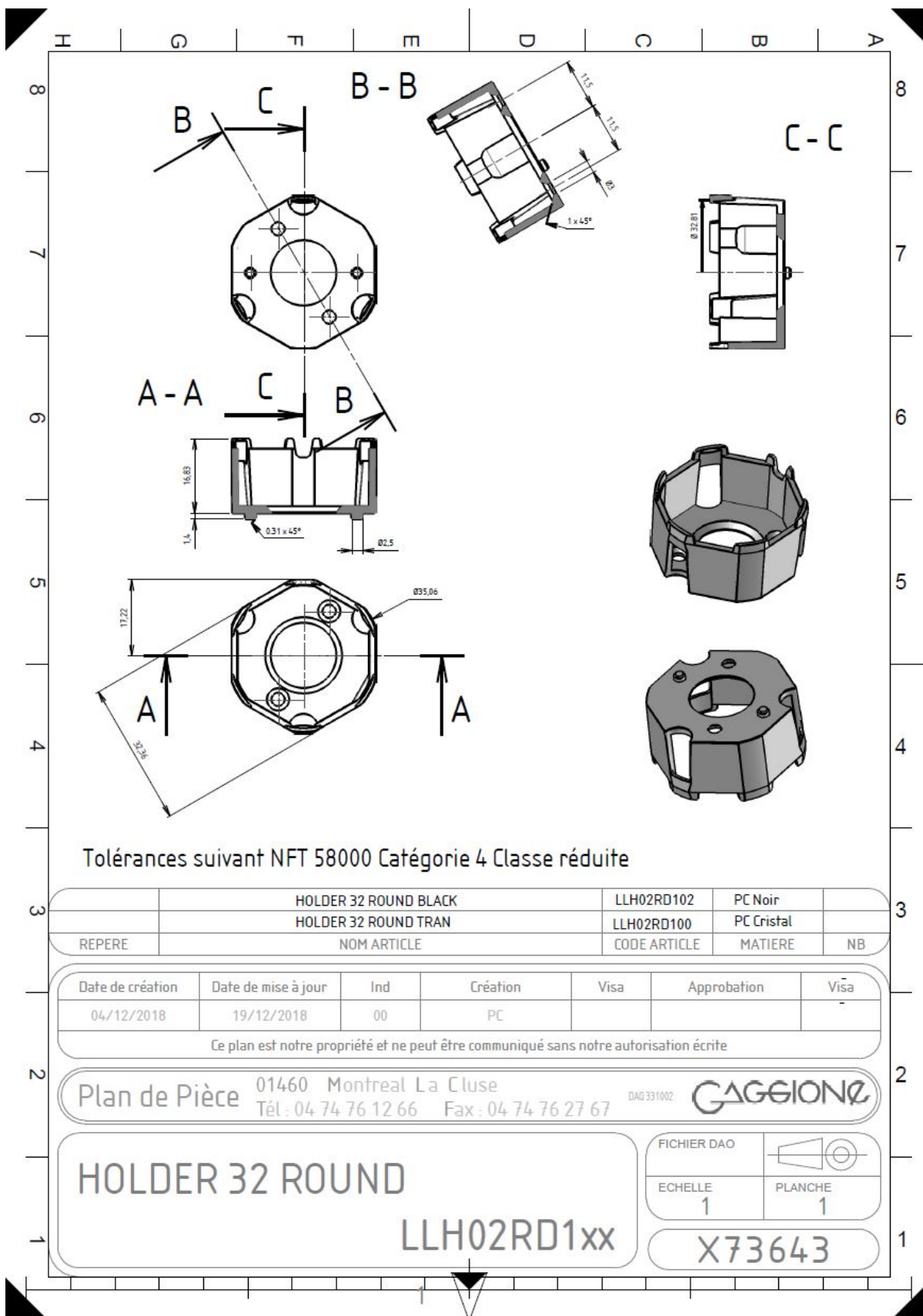
**LLH02RD100**



Holder for 32mm diameter collimator

# COMPATIBILITY MATRIX

LED Manufacturer	LED Reference	FWHM 1	FWHM 2	FWTM 1	FWTM 2	Efficacy 1	Efficacy 2	CCI
------------------	---------------	--------	--------	--------	--------	------------	------------	-----



**GAGGIONE S.A.S DOCUMENTS AND DATA** All data provided in our datasheets, mechanical drawing and all other downloadable documents on our website [www.optic-gaggione.com](http://www.optic-gaggione.com) are subject to change at any time without prior notice. GAGGIONE S.A.S. do not guarantee any of its own document nowhere else than on its own websites. As a consequence, all GAGGIONE S.A.S. documents that are downloadable on distributors, partners or other third-party websites or mobile applications are NOT guaranteed by GAGGIONE S.A.S. All data provided in our documents are based on our own measurements and evaluation and performed in-house in our optical laboratory, or in a certified third-party laboratory. Also, all data, even simulated data, are provided for reference and design purpose only. All data may change at any time if GAGGIONE S.A.S. improves its products/services or improves its own laboratory equipment. GAGGIONE S.A.S. is not responsible for the final use conditions and takes no responsibility under certain use conditions, out of the material specification (PMMA, PC, Silicone, any other material used in our products). **USE OF CHEMICAL AGENTS FOR CLEANING OR ANY OTHER PURPOSES** GAGGIONE S.A.S. recommends only the use of an optical duster along with purified water. Any other product containing chemical agents, especially alcohol or glue, may damage the mechanical or photometrical properties of the product. This applies for direct contact with the product or nearby chemical agents vapors or drops. Always wear clean gloves not to alter the product's optical performances. GAGGIONE S.A.S. recommends the user to test its products in both prototypes and series assembly conditions in the end-fixture.