

# SHAPING YOUR LIGHT

lednlight  
by GAGGIONE

## LLL15A & LLL15N

### 150mm Linear Silicone TIR Optics

Our brand new range of products for architectural and UV applications includes two linear collimators (color mixing TIR) made with silicone.

Thanks to this performing and promising material, Gaggione could design an efficient solution for wall-washing, architectural lighting fixtures and UV applications.

The LLL15A provides a wide beam to enlighten a large surface (e.g. a wall, the ground, a roof, etc.) in a very homogeneous way. All the light is directed on the surface thanks to its advanced optical design.

The product integrates also mechanical functions for a fast assembling process shortening time-to-market.

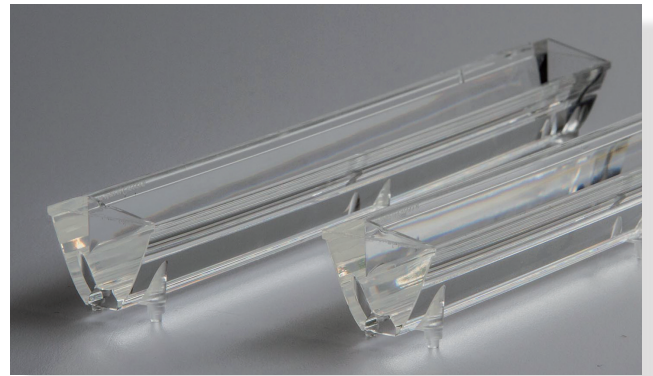
The ideal distance from the surface is ten centimeters. The LED pitch can be up to 1 cm without affecting light uniformity. Obviously, the shorter the pitch is the better the uniformity and color mixing will be.

If you need to place the fixture at a longer distance from the wall, just respect a 1:10 ratio between this distance and the LED maximum pitch to ensure the light uniformity and color mixing.

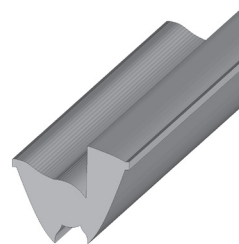
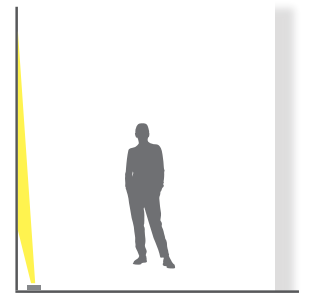
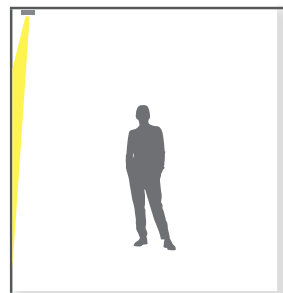
The LLL15N is a narrow beam linear collimator providing a line of light compliant with architectural lighting requirements. A sharp cut-off is obtained along a strip of light.

The UV curing industry is also using this product for the silicone capability to transmit UV rays at a very high efficiency.

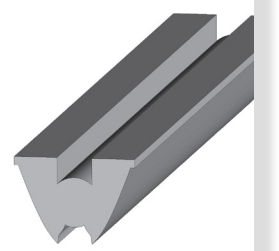
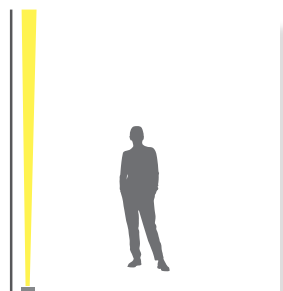
The silicone material has the great advantage to withstand combination of UV rays, heat and moisture so that those optical parts ensure a long life time in severe environment.



### Typical Application LLL15A

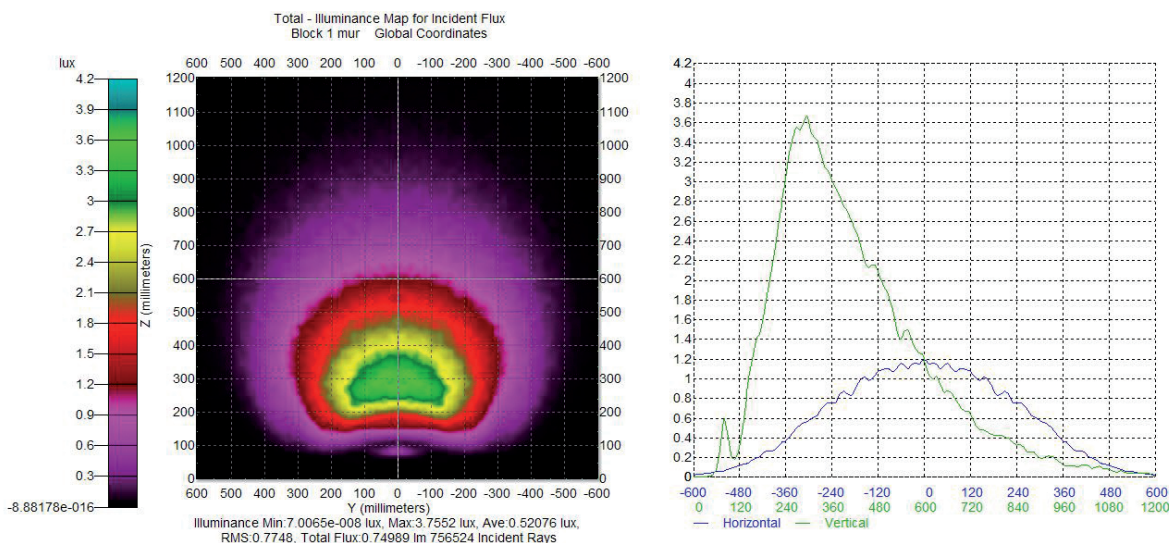


### Typical Application LLL15N

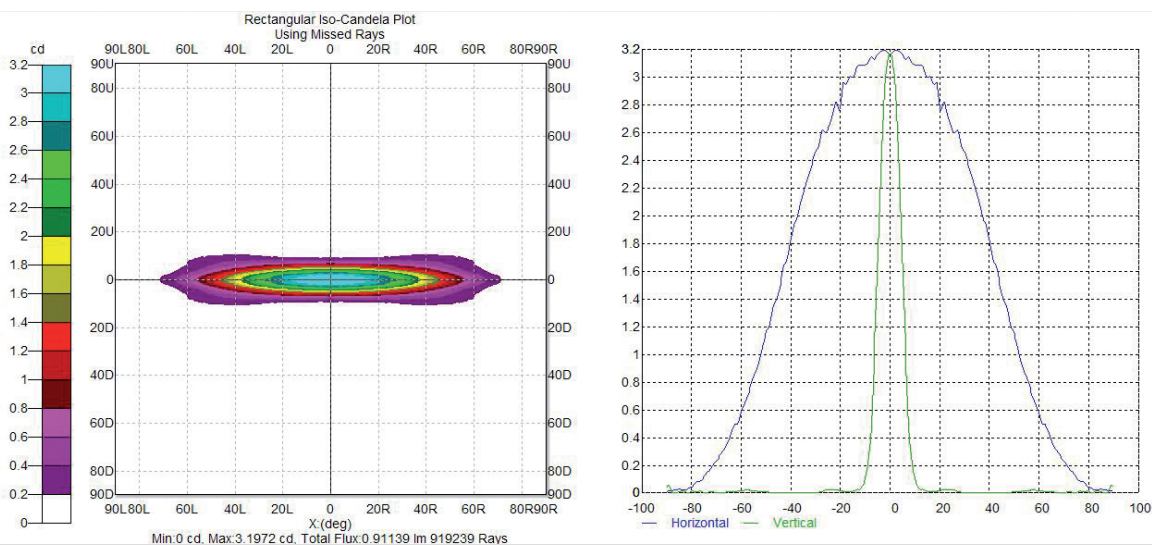


- Material: Optical Silicone
- Dimensions LLL15A: 150mm long, 22mm large, 21mm high
- Dimensions LLL15N: 150mm long, 22mm large, 18mm high
- Beam LLL15A: Asymmetric
- Beam LLL15N: Symmetric, narrow
- Mid power LED: Package up to 5630
- High power LED: Up to 2mm<sup>2</sup> LES
- Features:
- Homogeneous beam
  - Color Mixing TIR
  - Embedded mechanical functions for easy integration
  - Long lasting material even in severe environment

## LLL15A: Illuminance data with a LED of 1mm<sup>2</sup> as LES



## LLL15N: Illuminance data with a LED of 1mm<sup>2</sup> as LES



For additional information please refer to [www.lednlight.com](http://www.lednlight.com) or contact your local Sales Manager.